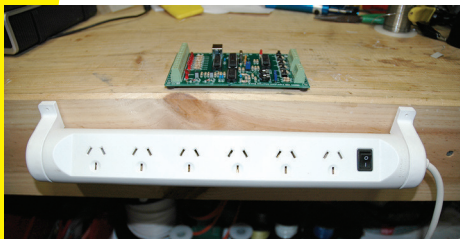
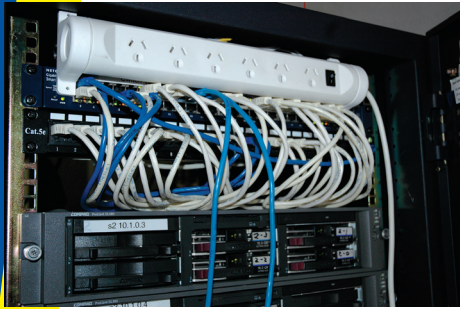


PRODUCT DATA SHEET



360° Swivel

Specifications



Features	<ul style="list-style-type: none"> ✓ Surge & overload protected ✓ Secure mounting brackets ✓ Rotatable to suit location and use ✓ 1.8m mains lead 	
Voltage Rating	240VAC	
Current	10 Amps	
Power Rating	2400 Watt	
APN	9318054088914	
TUN Inner / Outer	59318054088919 / 19318054088911	

Related Products



← Cat5e network patch leads. Various lengths available. Ideal for networking and ADSL modem connections.

US50**

4-way hanging powerboard. Features a long 5m power lead and chain to fasten it from a roof or beam keeping power off the ground. →

PT1199SS



Ideal for..

Office / Workshop



Founded in 1987 and proudly Australian owned and operated, Jackson Industries is a leading supplier of innovative telecommunication, power, surge protection, battery and electrical products. Jackson products are available in over 13,500 retail outlets across Australia including all major Hardware, Department, Supermarket, Electrical and Specialist outlets. Many Jackson Industries products have current Australian Registered Design, and/or patents in force to protect intellectual property rights.